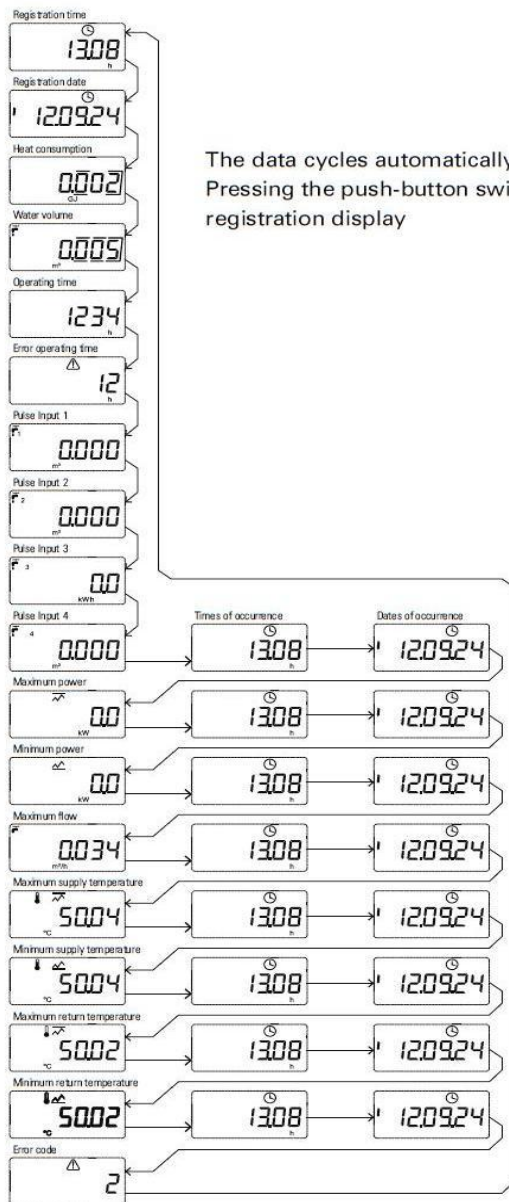


OPERATING GUIDE

Compat Heat Meter elf APATOR



The data cycles automatically every 2 seconds. Pressing the push-button switches to the next registration display

Registration time
13.08
h

Registration date
12.09.24

Heat consumption
0002
GJ

Water volume
0005
m³

Operating time
1234
h

Error operating time
12
h

Pulse Input 1
0000
m³

Pulse Input 2
0000
m³

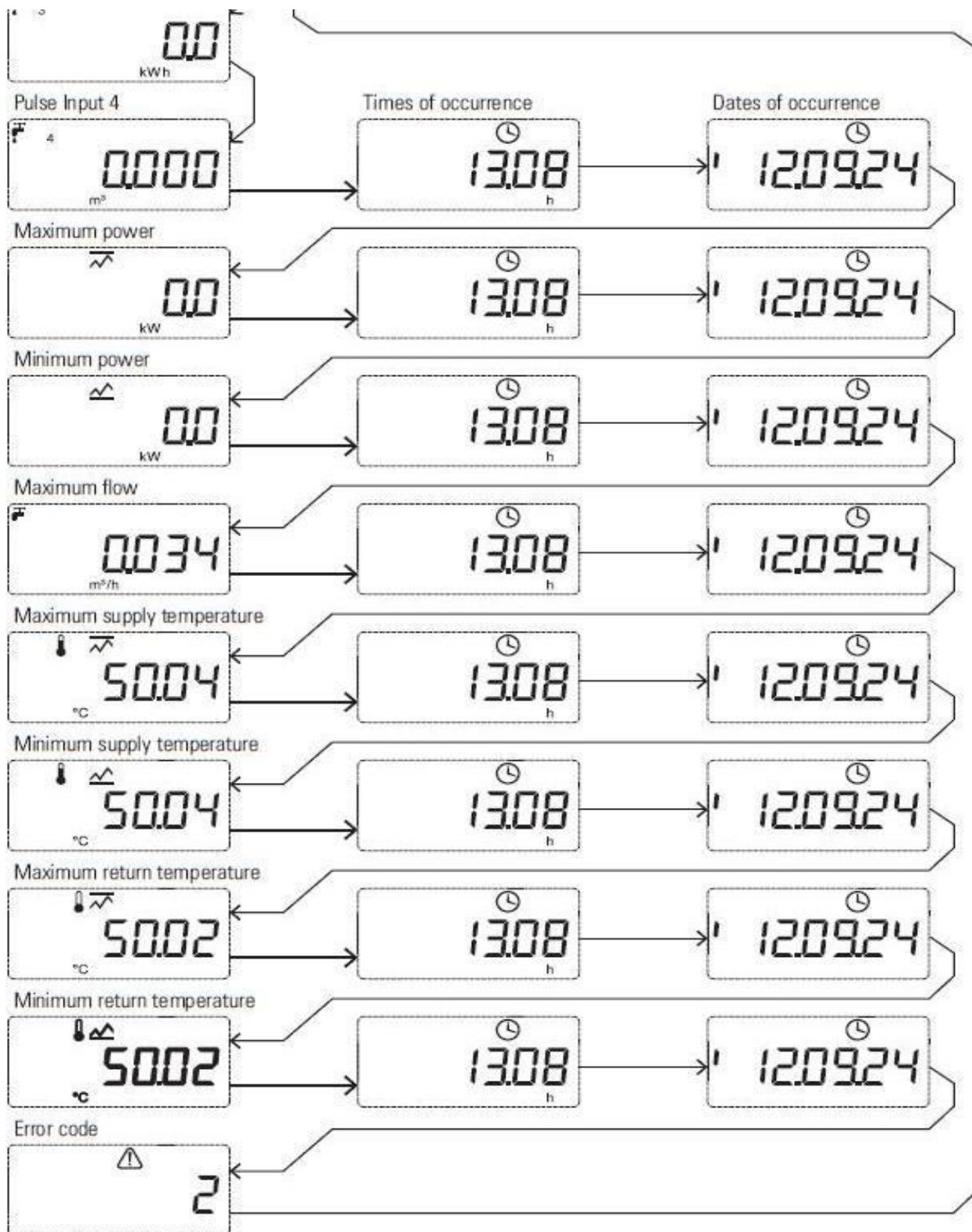
Pulse Input 3
00
kWh

Pulse Input 4
0000

The data cycles automatically
Pressing the push-button switch
registration display

Times of occurrence
1200

Dates of occurrence
120024



The data from recording in cycle 1 and 2 and from failure recording can only be read via the communication interface.

----- 01

Press the button repeatedly until the desired group number is displayed with messages.

----- 02

----- 03

----- 04

----- 05

You can switch between the display groups as follows: hold the push-button for approx. 2 seconds until the group number is displayed. Release the button.

Then press and hold again until the first value of the selected group is displayed.

The successive values in group 1, 4 and 5 (actual, service, test) are displayed by repeatedly pressing the button.

When switched to display the data in group 2 and 3 (registered data), the displayed values cycle every 2 seconds. The first reading is the message with the number of maximum registrations available in the group. This message is displayed only once per each access to the data group (it does not repeat in cycling).

16

The displayed number depends on the user configuration. If "0" is configured for the given group, the group is disabled from recording.

This reading is followed by a cycled display of successive values in the record; at the beginning of each record shows a message which record will be displayed at the given moment and how many records have been registered, e.g.

010-010

the 10th registration (the latest) out of 10 is displayed.

Short press of the push-button displays the next written record - see the screen image below:

009-010


the 9th registration (the second latest) out of 10.


If the record is corrupted, (the CRC of the data in the record is incorrect), the record number will be displayed alternately with the error message. Example (see below): the messages will be displayed alternately to alert that the data is incorrect.


009-010


Error

If the next registration increases the number of registrations above the maximum (set by the user), the 4 oldest registrations will be deleted and the new one written. Hence the displayed number of registrations will decrease by 3 and increase by 1 after the next write, etc. If the next registration occurs when the archive is viewed, the registration data display will be stopped and restarted by showing the number of maximum registrations for the specific archive group. If during the display of data in group 2 or 3 a configuration write of registration cycles is made, the display will be stopped and the LCD will revert to group 1 of basic data.

If the symbol  flashes when displaying the actual data, an error has occurred and the error code is not zero.

If  is displayed, there is flow in the direction of counting volume and heat.

The symbol  means that the current flow direction is wrong. When very small flows occur, the direction symbols will appear shortly.

The symbol  means that the jumper is installed and writing of calibration and configuration data is possible.

The LCD returns to the actual data display and shows the heat consumption in any operating mode if the push-button is not operated for ca. 3 minutes.

The annexes feature figures which provide guidance on operating the LCD.

Annex A shows the display in the basic operating mode of the heat meter with the recording configured to disable monthly and annual registrations.

Annex B shows the display of monthly and annual registrations provided that they are active and correct.

If the heat meter is unable to correctly read the configuration or consumption data following battery replacement, its operation is halted and the following message is displayed:

Error

The user can only call the technical service.